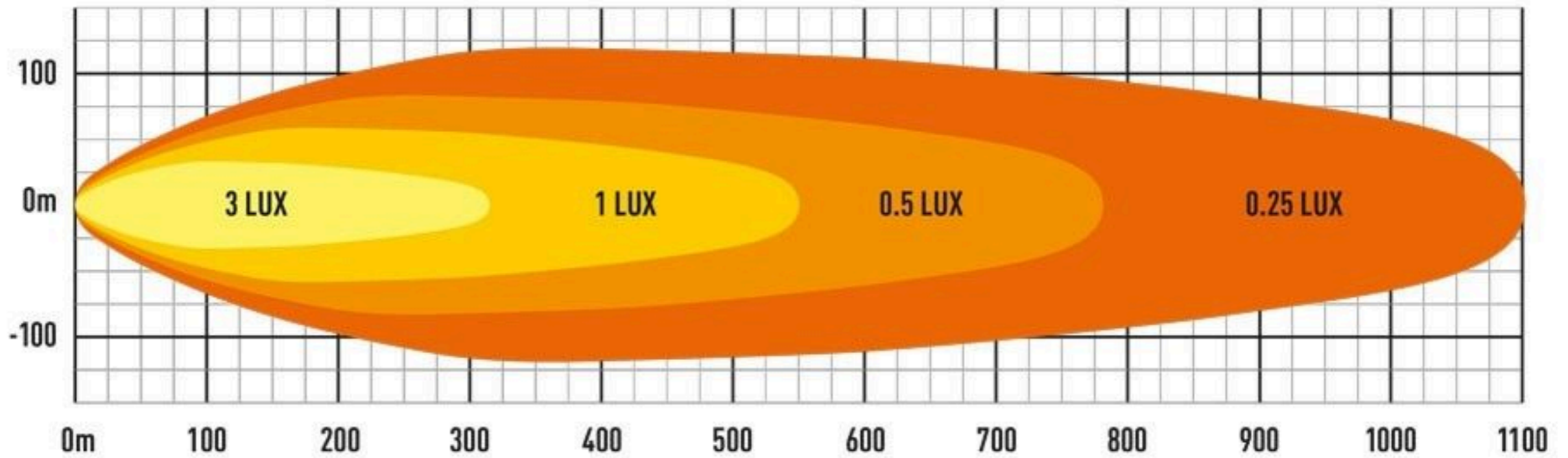


# LINEAR-48 STD

Generated from BSI lamp photometric test data: on road measurement data



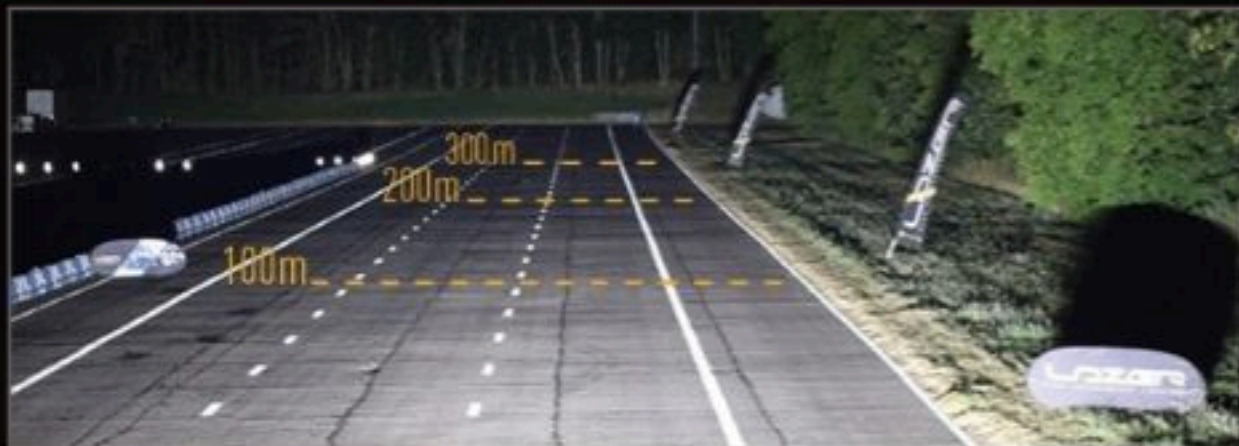


# LAZER

HIGH PERFORMANCE LIGHTING

## LINEAR 48

RAW LUMENS: 18,000 / 1 LUX @ 550m / E-MARK REF: N/A

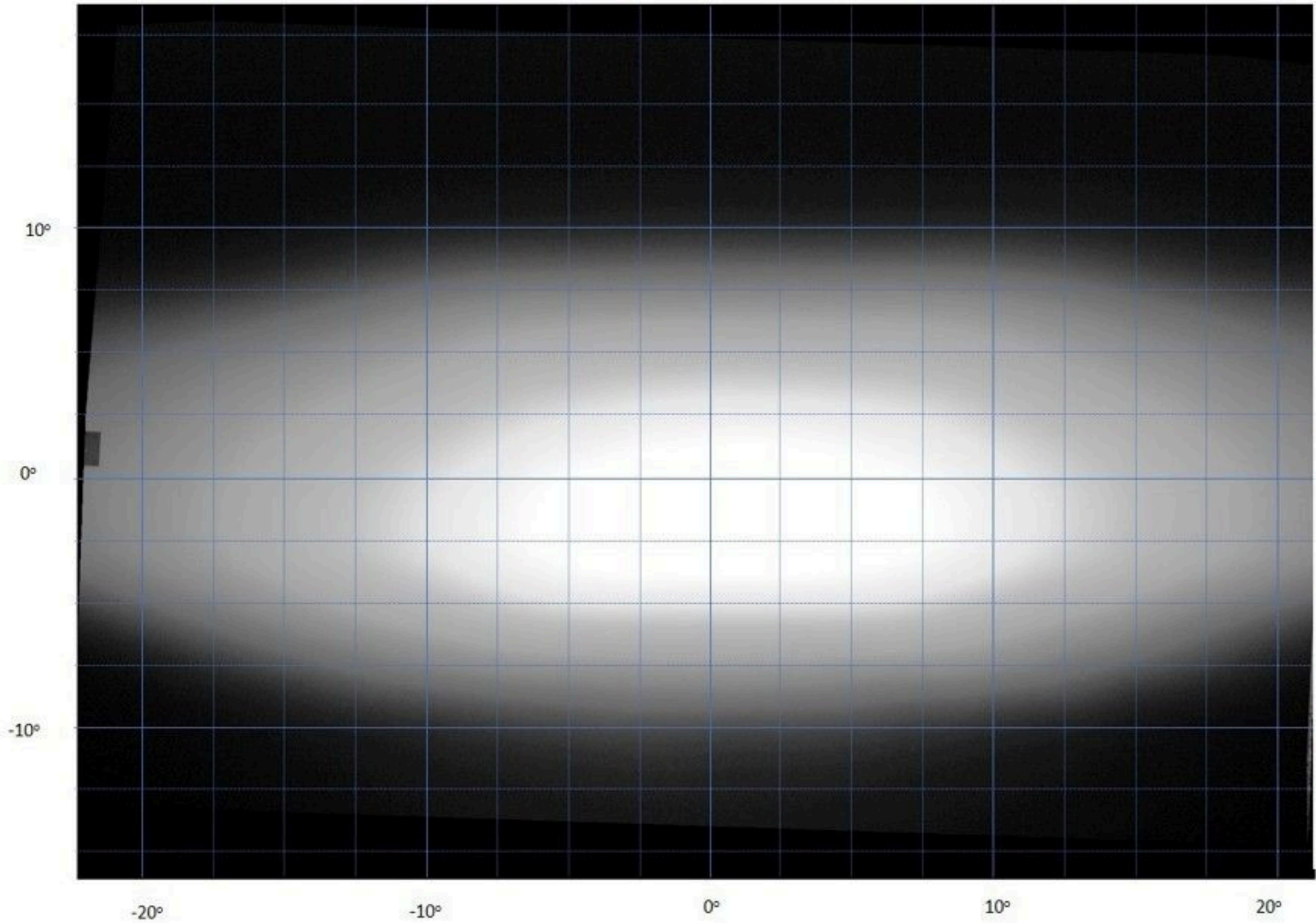


1m

5  
YEAR  
WARRANTY

IP67  
WATERPROOF







LINEAR

12  
ELITE



# LINEAR

## UNBREAKABLE POLYCARBONATE LENS

with lifetime guarantee.

## VACUUM- METALLISED OPTICS

deliver an optimal balance  
of light intensity and left/right  
spread illumination.

## CORROSION RESISTANCE

to automotive grade  
standards.

## LOW PROFILE CROSS-SECTION

facilitates fitting into  
compact spaces.

## VARIOUS INSTALL OPTIONS

available including stainless steel  
side, and centre mounting brackets.

## E-MARK CERTIFICATION

across the entire Linear product range.

## ANTI-THEFT MOUNTING BRACKETS

and fasteners available  
(included across Elite range).

## AERODYNAMIC DESIGN

reduces the wind noise affecting  
other installations.

## ADVANCED 3W LEDs

as used in Lazer Lamps 2018/9  
WRC lighting solutions.

## DYNAMIC DRIVE MODULATION

is maintained at the optimal level  
considering environmental and thermal  
conditions of the lamp.

